

Humana
Healthy Horizons®
in Oklahoma

ASAM

Humana Healthy Horizons® uses the American Society of Addiction Medicine (ASAM) criteria to determine medical necessity for substance use services.



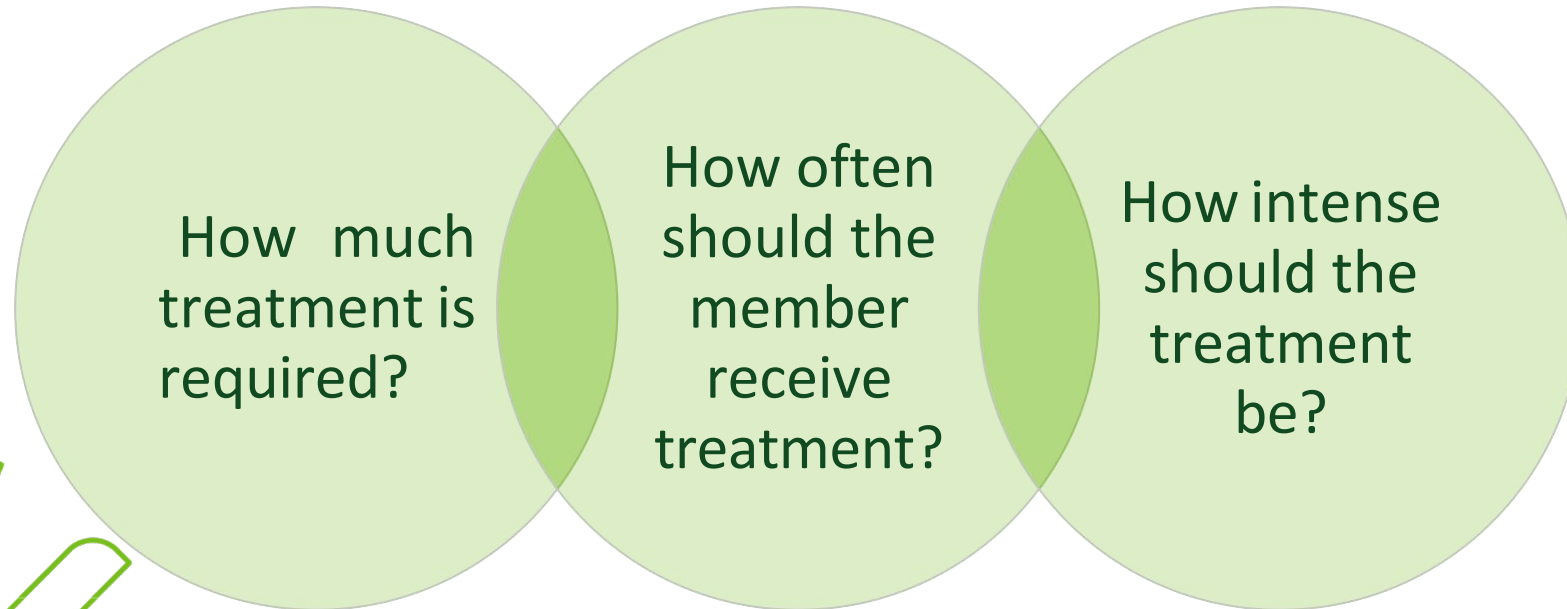
Objectives

After completing this lesson, learners will be able to:

- ☐ Provide an overview of the ASAM Levels of Care (Third Edition)
- ☐ Identify the changes being made to the ASAM Levels of Care in the Fourth Edition (July 2024)



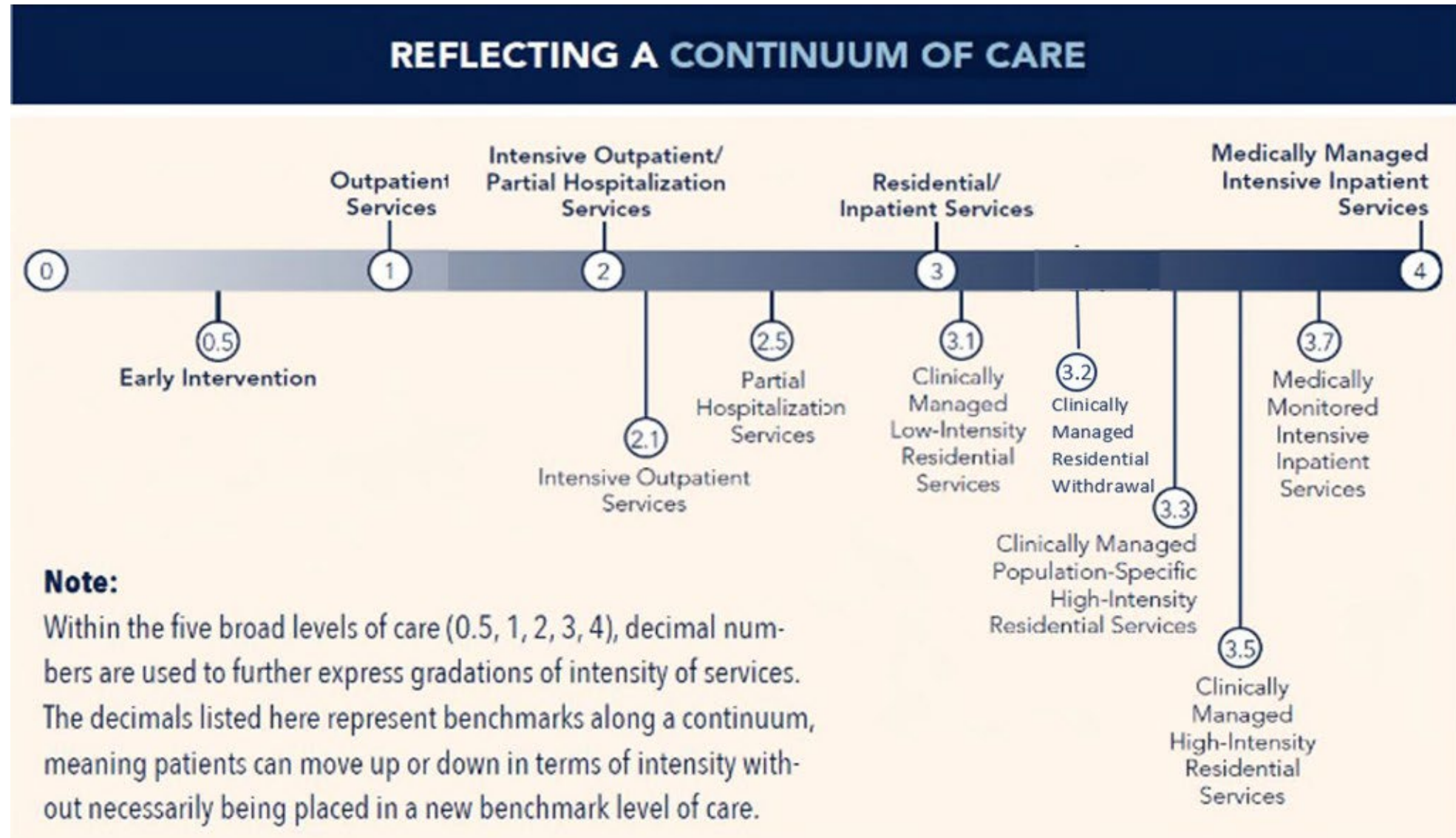
ASAM Levels of Care (Third Edition)



Benchmark Levels of Care



ASAM American Society of
Addiction Medicine



Level 0.5 ASAM

Referred to as Early Intervention

- Consists of assessment and education for those at-risk of developing a substance use disorder
- Intervene before person develops a substance use disorder



Level 1 ASAM Outpatient Services



Intensity

Less than 9 hours of service per week for adults

(Less than 6 hours for adolescents)



Opioid Treatment Program

Not specified for adolescents



Setting

Variety of settings that include recovery and/or motivational enhancement therapy

Appropriate for people with less severe disorders, or as a step-down from more intensive services

Level 2 ASAM Intensive Outpatient Services



Intensive Outpatient Services (2.1)

More than 9 hours of service per week

(More than 6 hours for adolescents)



Partial Hospitalization Services (2.5)

20 or more hours of service per week

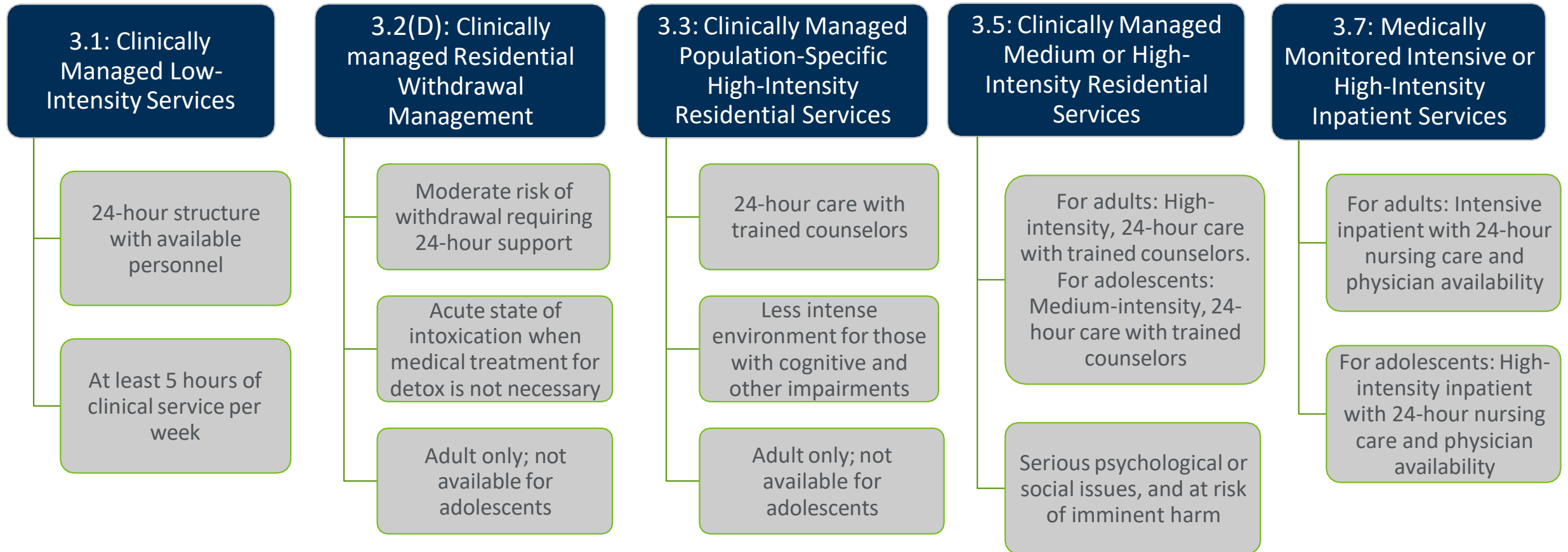
Provides structure, and daily oversight for people who need daily monitoring, but not 24/7



Setting

More organized outpatient setting

Level 3 ASAM Inpatient Treatment



Level 3 has varying degrees of inpatient treatment

Level 4 ASAM Detox

Medically managed intensive inpatient services

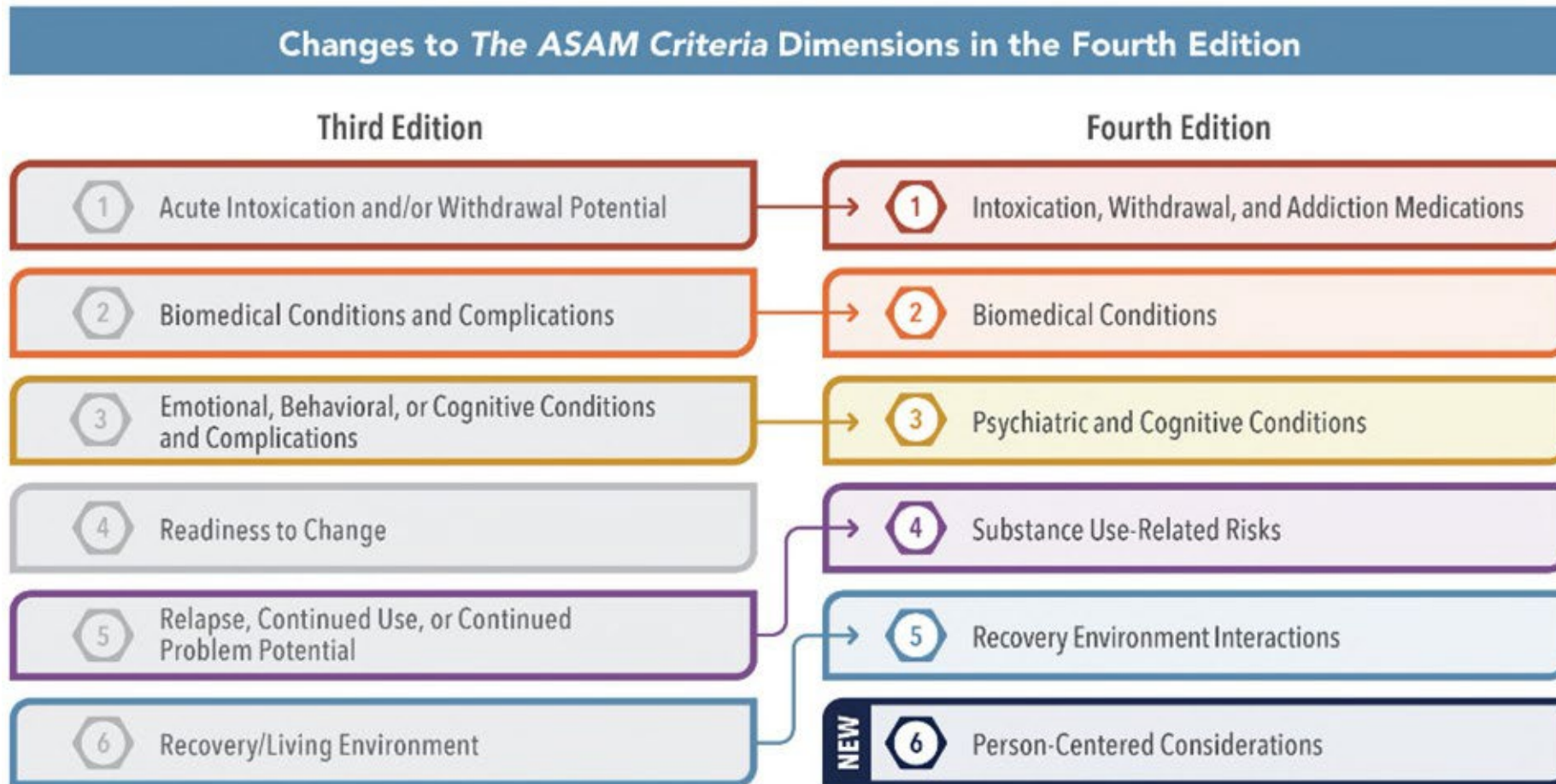
- 24-hour nursing care
- Daily physician care
- Counseling
- Typically housed in a fully licensed Medical Hospital, however depending on the market program settings may include acute psychiatric hospitals and licensed addiction treatment specialty hospitals.



2024 Upcoming Changes – Fourth Edition



ASAM American Society of
Addiction Medicine



The Fourth Edition reorders the dimensions from the Third Edition. Readiness to change is now considered within each dimension, and the Third Edition Dimensions 5 and 6 were shifted to Dimensions 4 and 5, respectively, in the Fourth Edition. The new Dimension 6: Person-Centered Considerations considers barriers to care (including social determinants of health), patient preferences, and need for motivational enhancement.

2024 Upcoming Changes – Fourth Edition



ASAM American Society of
Addiction Medicine

The ASAM Criteria Continuum of Care for Adult Addiction Treatment



2024 Upcoming Changes – Fourth Edition

Dimension 1: Intoxication, Withdrawal, and Addiction Medications

- Intoxication and Associated Risks
- Withdrawal and Associated Risks
- Addiction Medication Needs

Dimension 2: Biomedical Conditions

- Physical Health Concerns
- Pregnancy-Related Concerns
- Sleep Concerns

Dimension 3: Psychiatric and Cognitive Conditions

- Active Psychiatric Symptoms
- Persistent Disability
- Cognitive Functioning
- Trauma-Related Needs
- Psychiatric and Cognitive History

Dimension 4: Substance Use-Related Risks

- Likelihood of Engaging in Risky Substance Use¹
- Likelihood of Engaging in Risky SUD-Related Behaviors¹

Dimension 5: Recovery Environment Interactions

- Ability to Function Effectively in Current Environment
- Safety in Current Environment
- Support in Current Environment
- Cultural Perceptions of Substance Use and Addiction²

Dimension 6: Person-Centered Considerations

- Barriers to Care
- Patient Preferences
- Need for Motivational Enhancement



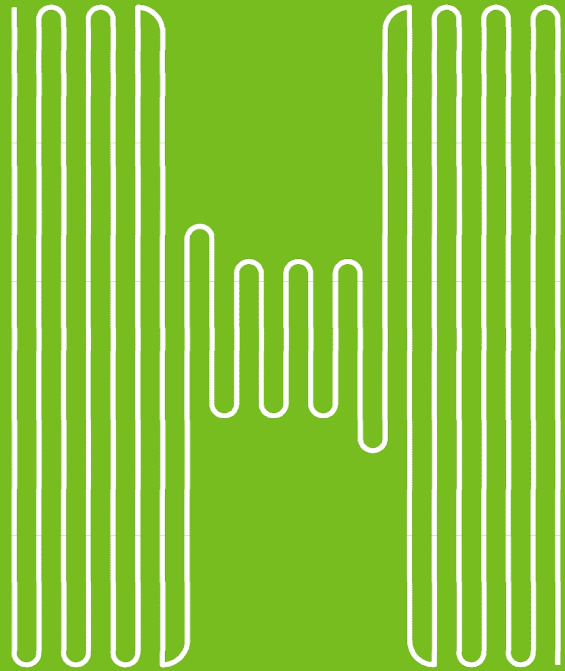
References

Mee-Lee, D., Shulman, G.D., Fishman, M.J., Gastfriend, D.R., & Miller (Eds.). (2013, 3rd ed.). *The ASAM Criteria: Treatment Criteria for Addictive, Substance-Related, and Co-Occurring Conditions*. The Change Companies. American Society of Addiction Medicine.

[ASAM Criteria 4th Edition](#)



Humana
Healthy Horizons®
in Oklahoma



Thank you