

Humana Community Navigator®

Addressing health-related social needs can be important to your patient's health.

That's why Humana Community Navigator, powered by findhelp, offers an online directory of community resources that provides your practice access to more than **600,000** social service programs across the United States.

For any patient, no matter their insurance carrier, Humana Community Navigator can unlock resources that support your patient's care plan, leading to better health outcomes.

Key Benefits

Reduce administrative burden for your practice

- Access one, easy-to-use directory of community resources at no cost

Enhance patient experience through personalized results

- Recommend resources in over 100 languages that can be delivered in your patient's preferred communication method (via email, text or print)
- Offer food, housing and transportation resources in addition to legal, education, employment and social support
- Share resources that are free, reduced cost or based on a sliding scale

Create your own login to save favorites and customize your own experience and log of referrals



Contact your Humana market representative or visit [Humana.findhelp.com](https://www.humana.com/findhelp) to get started.



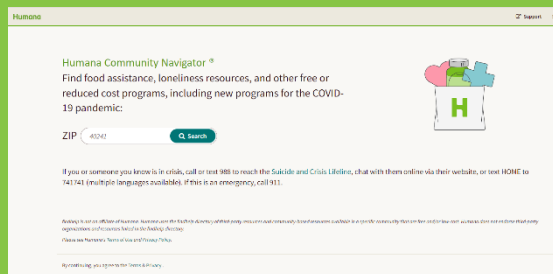
Humana®

GHHLPTQEN

Getting Started

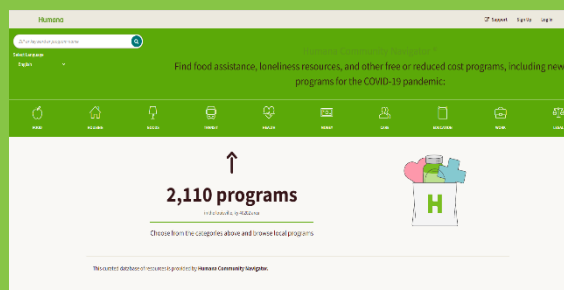
Visit [Humana.findhelp.com](https://www.humana.com/findhelp.com)

Enter your patient's zip code and set search parameters to access resources.



Review resources

Type in a keyword or select a category to review resources.



Share the results

Choose the resources that best fits your patient's situation and email, text or print.

